

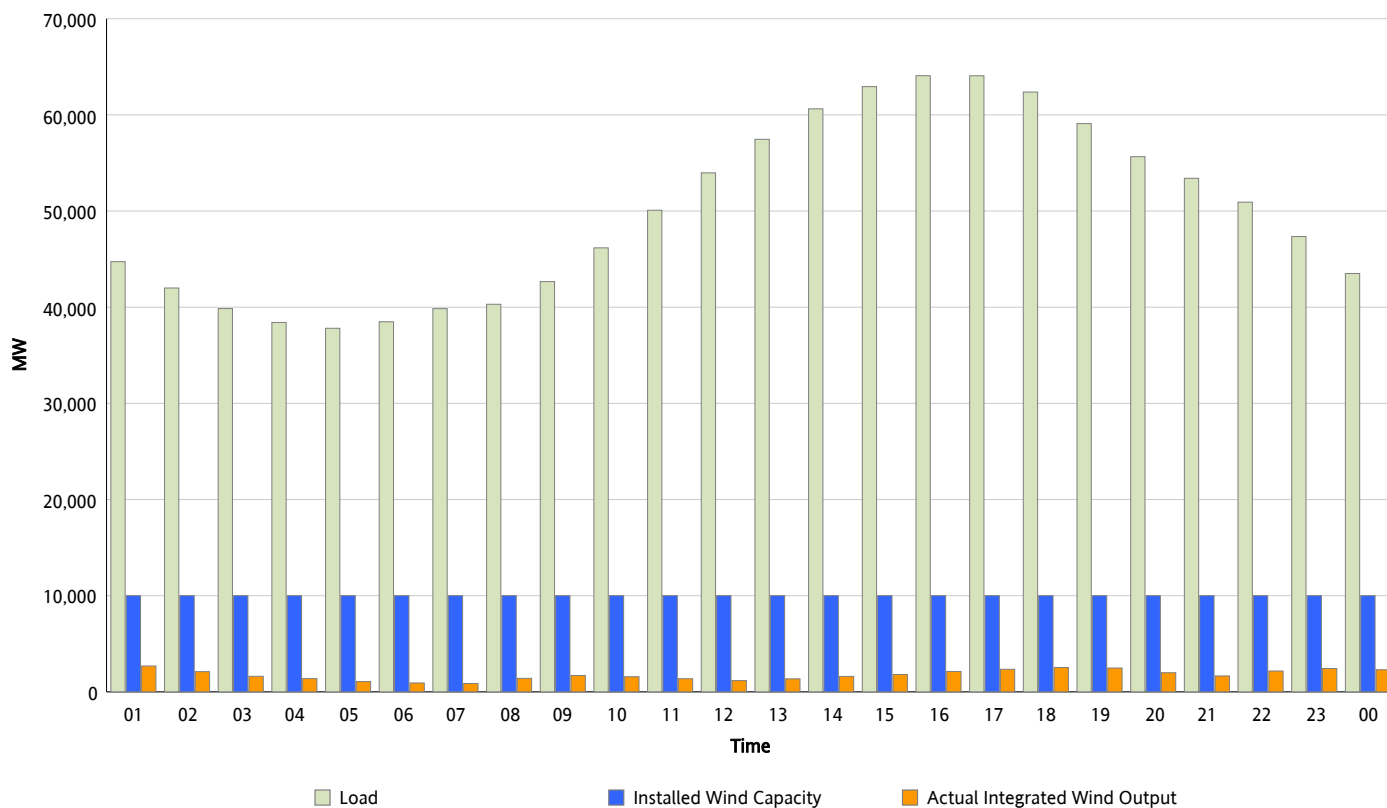


## ERCOT Grid Operations

### Wind Integration Report : 08/10/2012

Peak Load	64,070 MW
Load Peak Hour (HE)	16
Wind Over Peak	2,123 MW
Wind Record 06/19/12	8,368 MW
Max Wind Value*	2,791 MW
Wind Peak Time	00:13
Wind Integration %	6.1 %

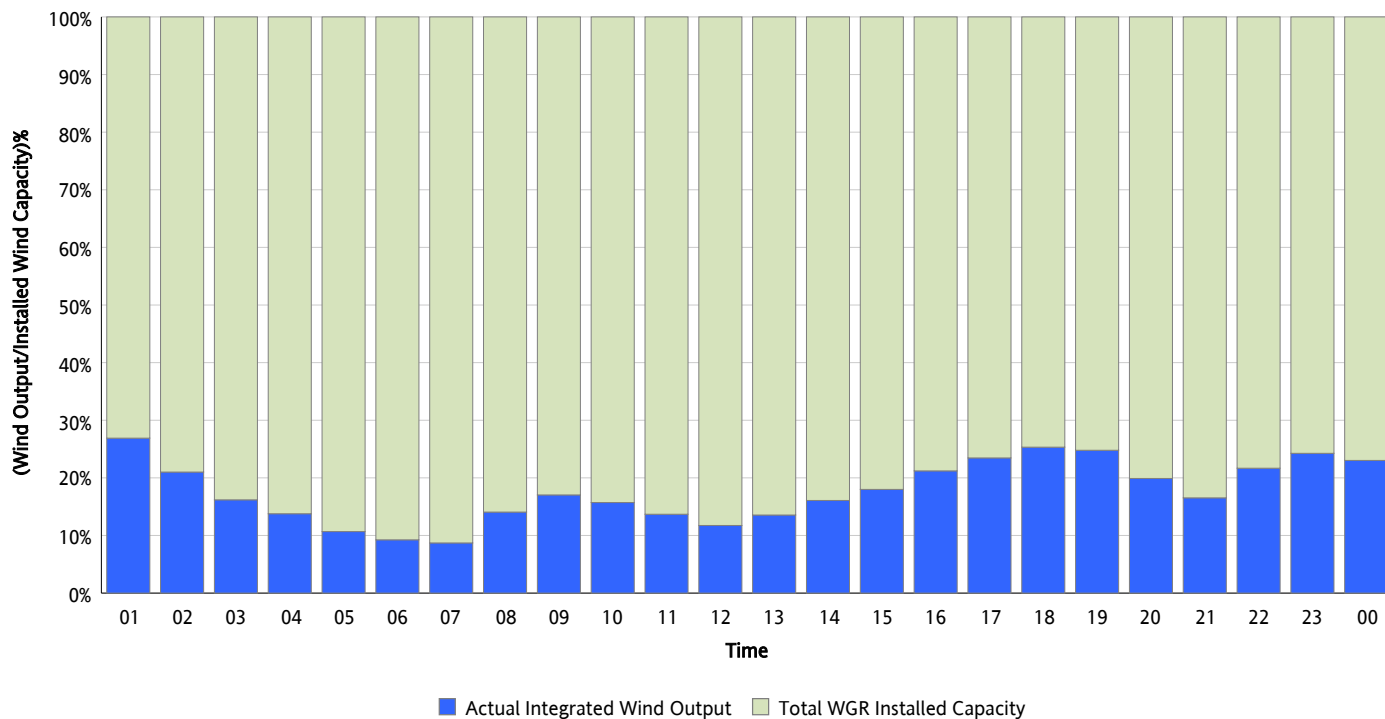
**Hourly Average Actual Load vs. Actual Wind Output**  
**08/10/2012**



\* Wind Record and Wind Max represent instantaneous values and the rest of the values are integrated over the hour

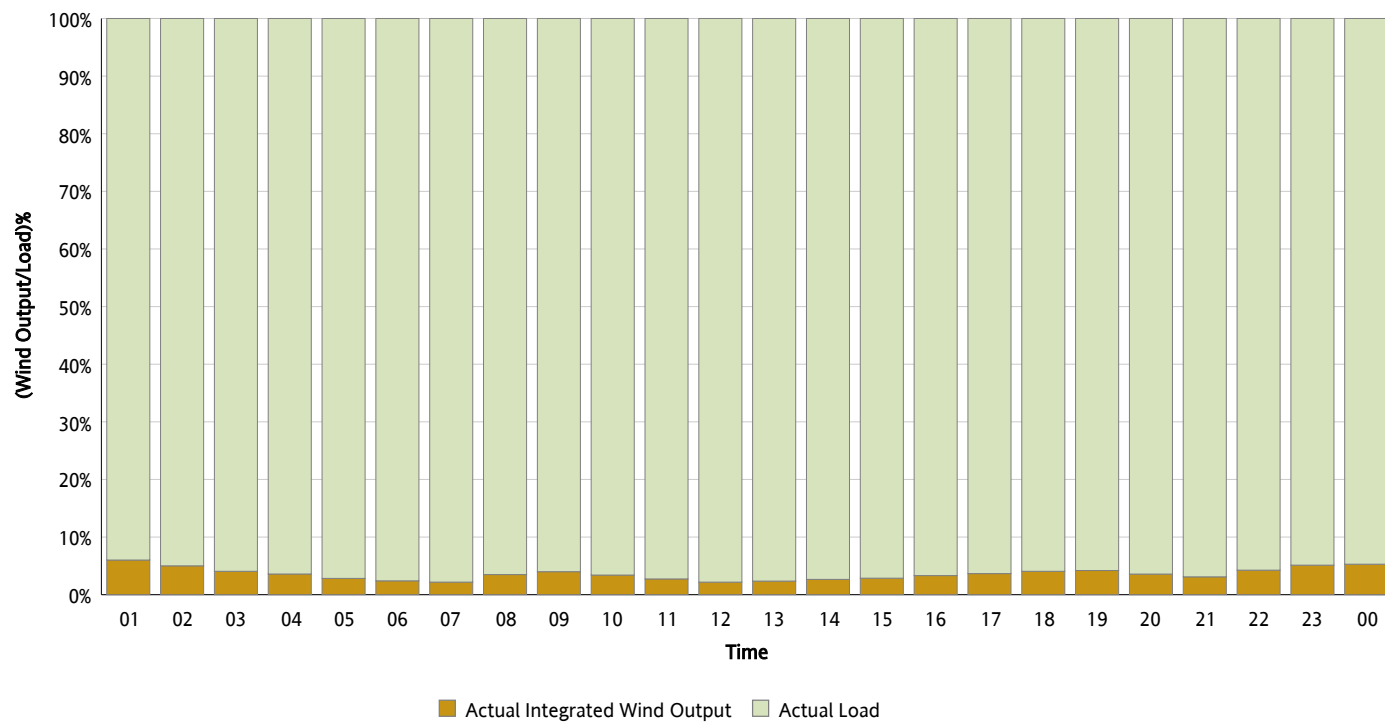
## Actual Wind Output as a Percentage of the Total Installed Wind Capacity

08/10/2012



## Actual Wind Output as a Percentage of the ERCOT Load

08/10/2012



## ERCOT Load vs. Actual Wind Output

08/03/2012 - 08/10/2012

